

# FREDRICK RAMOND

FR42342PCM

Replacement Parts: SHADE: R 42342SH

[DRAWING 1]

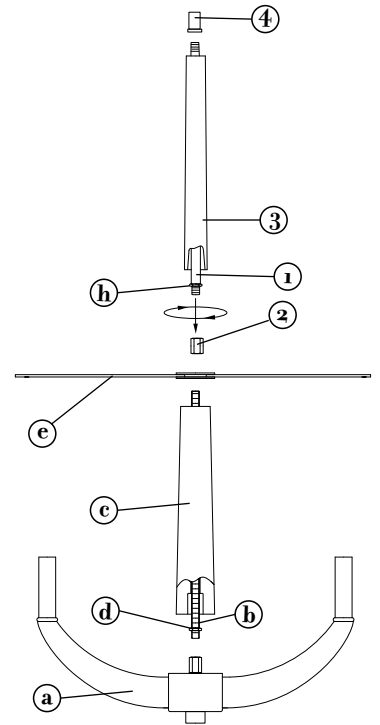
## ASSEMBLY INSTRUCTIONS

Assembly of this fixture will be accomplished assembling main body, attaching the mounting strap to the junction box, then making all necessary electrical connections, and then hanging the fixture from the ceiling.

**SAFETY WARNING:** Read wiring and grounding instructions [FRIS 18] and any additional directions. Turn power supply off during installation. If new wiring is required, consult a qualified electrician or local authorities for code requirements.

### STEP 1

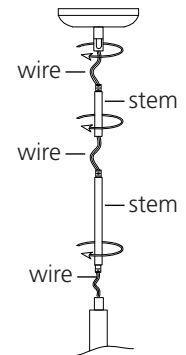
- 1 Slip stem (b) along wire and thread into coupler (b2) approximately 3/8". Tighten hex nut (c) against coupler (b2) to lock stem (b) in place - see Drawing 1.
- 2 Slip wood column (d) along wire and over stem (b), followed by shade bracket (e).
- 3 Thread hex coupler (2) onto end of center stem (b) and tighten to secure parts.
- 4 Slip center tube (1) along wires and thread tube into coupler (2), located on the top of center column (c), approximately 3/8". Tighten hex nut (h) down onto coupler (2) to lock center tube (1) in place.
- 5 Slip top wood center column (3) over center tube (1) and align sides of top column with sides of lower wood column (c) on fixture main body.
- 6 Slip coupler (4) along wire and thread onto top of exposed center tube (1), and tighten.



[DRAWING 2]

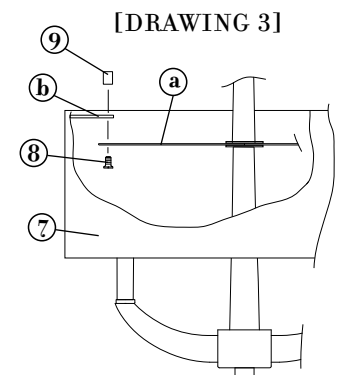
### STEP 2

- 1 Determine the desired height the chandelier will be installed at. The fixture is supplied with 1-6" stem and 2-12" stems. Determine what combination of stems is needed to achieve desired length - see Drawing 2.
- 2 Slip stems over wire and thread first stem onto top of chandelier. Repeat this process until all required stems are threaded together.
- 3 Slip wire through center of canopy swivel and thread onto stem assembly.
- 4 Fixture is ready for installation.



### STEP 3

- 1 To attach shade (7), slip shade up around main body assembly and set shade tab (b) on top of fixture arm (a).
- 2 Slip screw (8) through hole in fixture arm (a) and shade tab (b) and thread barrel knob (9) onto end of screw (8) to secure shade.
- 3 Fixture can be lamped accordingly at this time.



[DRAWING 3]



FREDRICK RAMOND

ESTABLISHED 1965

A Division of Hinkley Lighting, Inc.

33000 PIN OAK PARKWAY 1 AVON LAKE, OHIO 44012  
toll free 800.446.5539 | phone 440.653.3500

01.01.13

## WIRING AND GROUNDING INSTRUCTIONS

**SAFETY WARNING:**

Read wiring and grounding instructions [FRIS 18] and any additional directions. Turn power supply off during installation. If new wiring is required, consult a qualified electrician or local authorities for code requirements.

**STEP 1 WIRING INSTRUCTIONS****Indoor Fixtures**

- 1 Connect positive supply wire (a) (typically black or the smooth, unmarked side of the two-conductor cord) to positive fixture lead (b) with appropriately sized twist on connector - See Drawings 1 or 2.
- 2 Connect negative supply wire (c) (typically white or the ribbed, marked side of the two-conductor cord) to negative fixture lead (d).
- 3 Please refer to the grounding instructions below to complete all electrical connections.

**Outdoor Fixtures**

- 1 Connect positive supply wire (a) (typically black or the smooth unmarked side of the two-conductor cord) to positive fixture lead (b) with appropriately sized twist on connector - See Drawings 2 or 3.
- 2 Connect negative supply wire (c) (typically white or the ribbed, marked side of the two-conductor cord) to negative fixture lead (d).
- 3 Cover open end of connectors with silicone sealant to form a watertight seal.
  - If installing a wall mount fixture, use caulk to seal gaps between the fixture mounting plate (backplate) and the wall. This will help prevent water from entering the outlet box. If the wall surface is lap siding, use caulk and a fixture mounting platform specially.
- 4 Please refer to the grounding instructions below to complete all electrical connections.

**STEP 2 GROUNDING INSTRUCTIONS****Flush Mount Fixtures**

For positive grounding in a 3-wire electrical system, fasten the fixture ground wire (e) (typically copper or green plastic coated) to the fixture mounting strap (1) with the ground screw (2) - See Drawing 1.

Note: On straps for screw supported fixtures, first install the two mounting screws in strap.

Any remaining tapped hole may be used for the ground screw.

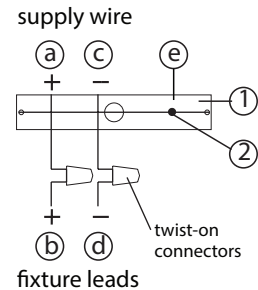
**Chain Hung Fixtures**

Loop fixture ground wire (e) (typically copper or green plastic coated) under the head of the ground screw (2) on fixture mounting strap (1) and connect to the loose end of the fixture ground wire directly to the ground wire of the building system with appropriately sized twist-on connectors - See Drawing 2.

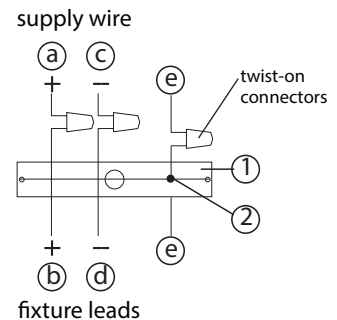
**Post-Mount Fixtures**

Connect fixture ground wire (e) (typically copper or green plastic coated) to power supply ground with appropriately sized twist-on connector inside post. Cover open end of connector with silicone sealant to form a watertight seal - See Drawing 3.

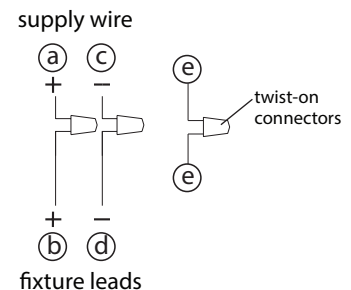
[drawing 1]



[drawing 2]



[drawing 3]



**FREDRICK RAMOND**  
ESTABLISHED 1965

A Division of Hinkley Lighting, Inc.

33000 PIN OAK PARKWAY | AVON LAKE, OHIO 44012  
toll free 800.446.5539 | phone 440.653.5500